

MONTHLY MEMBERSHIP PROGRESS REPORT

LOCATION NEW JERSEY

District 16 N

Results as of: 3/31/2022

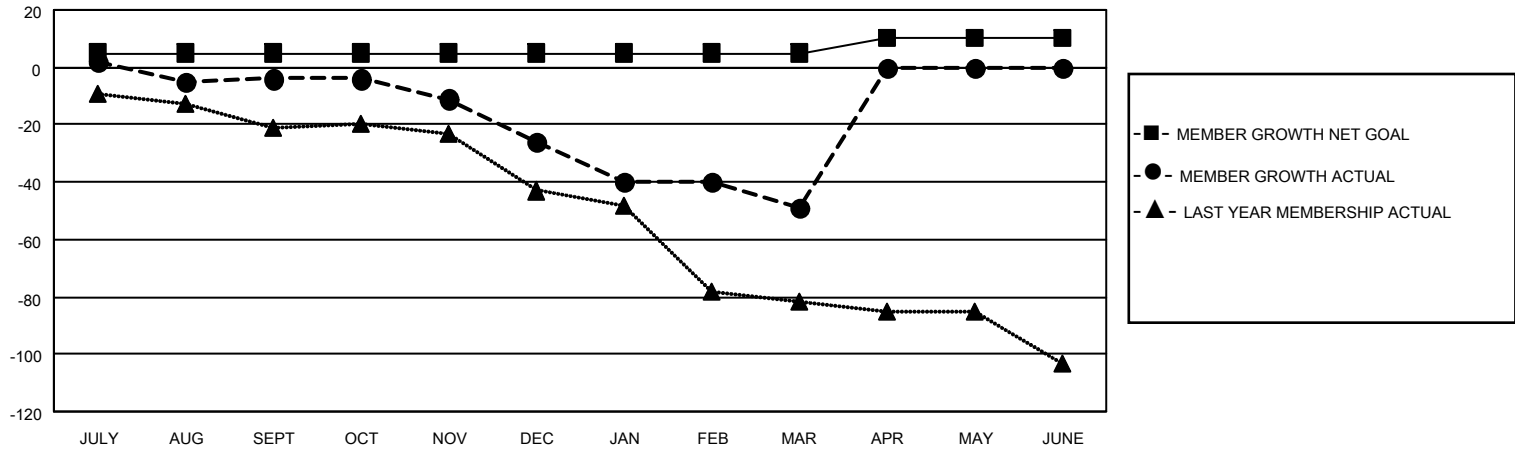
Clubs			
RESULTS FOR 2021-2022			
QUARTER	NEW CLUB GOAL	NEW CLUBS	DROPPED CLUBS
JULY/AUG/SEPT	0	0	0
OCT/NOV/DEC	1	0	1
JAN/FEB/MAR	0	0	0
APR/MAY/JUNE	1	0	0

Members			
RESULTS FOR 2021-2022			
QUARTER	MEMBER GROWTH NET GOAL	MEMBER GROWTH ACTUAL	DROPPED MEMBERS ACTUAL (including transfers)
JULY/AUG/SEPT	5	14	16
OCT/NOV/DEC	0	15	37
JAN/FEB/MAR	0	16	38
APR/MAY/JUNE	5	0	0

GOALS AND ACTUAL NEW CLUBS CUMULATIVE



GOALS AND ACTUAL MEMBERS CUMULATIVE



DROPPED CLUBS: 1	
DROPPED MEMBERS	
DECEASED	10
CLUB CANCELLED	9
OTHER	72
TOTAL	91

17 CLUBS OF 57 ADDED 1 OR MORE NEW MEMBERS

[CLICK HERE FOR CUMULATIVE MEMBERSHIP DATA](#)

<u>GENDER DISTRIBUTION</u>	
MALE	856 (70.92%)
FEMALE	350 (29.00%)
NON BINARY	0 (0.00%)
PREFER NOT TO ANSWER	1 (0.08%)
<hr/>	
TOTAL FAMILY UNIT MEMBERS	204
<hr/>	
FAMILY MEMBERS PAYING HALF DUES	106